

Original Research Article

Statistical analysis of zooplankton diversity in Hasanparthy lake of Hanumakonda district of Telangana State

Abstract:

In the present attempt is made to assess the various diversity indices of zooplankton in Hasanparthy Lake during the year 2022-23. A total of sixteen number species of zooplankton were observed in this study. The highest number of species are Rotifera group and least the lowest number of species are Ostracoda group. The Shannon_H and Simpson-1_D and Evenness diversity indices were calculated in the present study and the highest values of Shannon_H values were noticed in the Rotifera group and followed by Copepoda, Cladocera, and the Ostracoda. The Simpson-1_D values were highest in Ostracoda group and followed by Cladocera, Copepoda, and Rotifera. The abundance of zooplankton in the selected lake that in a non-polluted state and supports to trophic level.

Key words: Diversity, Zooplankton, Simpson, Shannon, Indices.

Introduction:

Water on the earth is in moves through the hydrological cycle. The endless circulation of water from the atmosphere to the earth and its return to the atmosphere through condensation, precipitation, evaporation and transpiration is called the hydrological cycle. The hydrological cycle depicted in illustrates the movement of water through the atmosphere to lithosphere and back into the atmosphere. As water is heated by the sun, its surface molecules become sufficiently energized to break free of the attractive force binding them together, and then evaporate and rise as invisible vapor in the atmosphere. Various factors influence the distribution of water on earth, leading to issues of water shortages and distribution for human consumption.

Animal species are considerably more diverse and numerous in inland waters than plants. Most of the major groups include terrestrial or marine species as well as freshwater forms. The zooplankton occupy a central position between the autotrophs and other heterotrophs and or an important link in food web of a freshwater ecosystem. The occurrence and abundance of zooplankton depends on its productivity. Which in turn, is influenced by physico-chemical parameters and the level of nutrients in the water the zooplankton, in general belong to four main taxonomic groups- Rotifera, Cladocera, Ostracoda and Copepoda [1].

Commented [A1]: What method did you use to collect the zooplankton? Please add.

Commented [A2]: add the index values you are analysing in this abstract

Commented [A3]: this statement does not relate to the results of your analysis. You should relate it to the influence of the season

Among zooplankton, Rotifers are apparently the most sensitive indicators of water properties [2]. So that the presence of certain species may be used as a reference of the physico-chemical characteristics of their habitat [3]. Rotifers are the other important components of zooplankton and are one of the principle links in the food chain. They have been widely used in assessment of aquatic pollution because of their sensitivity to small changes in environment, short generation time, parthenogenic mode of reproduction etc [4]. Use of different diversity indices continue to elevate disagreement among the naturalists, whether there is exist a biological relationship between them or not [5]. The diversity of the zooplankton are cannot be estimated with one diversity index, therefore various diversity indices were attempted in this present study.

Methodology:

Zooplankton collections was done by a plankton collecting net. The filtering cone was made up of nylon bolting silk plankton net (No. 25 mesh size 50 μ) was used for collection of zooplankton from water. The net was hauled for a distance of ten meters. Collected samples were transferred to labeled vial bottles containing 4% formalin. The qualitative estimation of zooplankton communities was carried out in the laboratory. The identification of zooplankton species was done by the Zoological Survey of India, Kolkata and the same was confirmed by [6],[7], [8].

During the present study the Hasanparthy lake was selected to analyze the abundance of zooplankton and the selected lake located 79°30' 50" E Longitude and 18°4' 27" N Latitude.

Simpson's diversity index [9]

The Simpson's diversity index (D) is calculated using the following equation:

$$D = 1 - \sum_{i=1}^s (p_i)^2$$

Where 'p_i' is the proportion of individuals of the ith taxon in the community. Simpson's index gives relatively little weight to the rare species and more weight to the common species. It ranges in value from 0 (low diversity) to a maximum of (1-1/s), where s is the number of taxa.

Shannon-Wiener Index [10]

This is a widely used method of calculating biotic diversity in aquatic and terrestrial ecosystems and is expressed as:

Commented [A4]: What is your research objective in this article? Please add it.

Commented [A5]: Before this paragraph, please explain when you collect zooplankton samples? Is there a repeat in the zooplankton collection?

Commented [A6]: can you add a map to this article and the point or location of the zooplankton collection.

$$H = - \sum_i^s (p_i) (\log_2 p_i)$$

Where

H= index of species diversity

s= number of species

p_i= proportion of total sample belonging to the 'i' th species.

A large H value indicates greater diversity, as influenced by a greater number and/or a more equitable distribution of species.

Results and Discussion:

In the present study period, a total of sixteen various zooplankton belongs belonging to four major groups were observed. Among all, seven species such are *Brachionus angularis*, *Brachionus caudatus*, *Brachionus fulcatus*, *Keratella tropica*, *Keratella cochlearies*, *Cephadella gibba* and *Lecana luna* from Rotifera group, three species, *Paracyclops fimbriatus* *Mesocyclops hyalinus* and *Mesocyclops leukarti* from Copepoda group, *Ceriodaphnia coronata*, *Moina macrocopa*, *Moina barnchiata* and *Bosmina longirostris* species from Ostracoda and *Cypris sps sp.* and *Heterocypris* from Ostracoda group. The monthly variation of zooplankton species in the selected lake was exposed in table no. 1.

The diversity indices of ~~Hasanparthy lake values~~ of four major groups of zooplankton in **Hasanparthy lake** were depicted in table no. 2. The Simpson-1_D diversity index values of Rotifera group is varied from 0.179 to 0.247. The highest diversity values were noticed in May 2022 and the lowest values were recorded in August 2022. The Shannon-D H values are ranged from 1.621 to 1.870. The highest values of Shannon wiener diversity are noticed in August 2022 and lowest values are recorded in October 2022. The values of species evenness are varied from 0.833 to 0.961. The highest values of species evenness were noticed in August 2022 and lowest values are recorded in May 2022. The Simpson-1_D diversity index values of Copepoda group is varied from 0.338 to 0.855. The highest diversity values were noticed in July 2022 and the lowest values were recorded in December 2022. The Shannon-D H values are ranged from 0.320 to 1.091. The highest values of Shannon wiener diversity are noticed in December 2022 and lowest values are recorded in July 2022. The values of species Evenness is varied from 0.291 to 0.998. The highest values of species evenness were noticed in January 2023, lowest values are recorded in July 2022.

Commented [A7]: Please discuss why species from the Rotifera group are most common compared to other groups.

Commented [A8]: this value is not found in table 2, please check again

Commented [A9]: this value is not found in table 2, please check again

Commented [A10]: this value is not found in table 2, please check again

Commented [A11]: this value is not found in table 2, please check again

Commented [A12]: this value is not found in table 2, please check again

In the same lake and year, the Simpson-1_D diversity index values of Cladocera group is varied from 0.554 to 0.334. The highest diversity values were noticed in February 2022 and the lowest values were recorded in August 2022. The Shannon_D values are ranged from 0.843 to 1.098. The highest values of Shannon wiener diversity are noticed in August 2022 and lowest values are recorded in June 2022. The values of species evenness are varied from 0.673 to 0.999. The highest values of species evenness were noticed in August 2022 and lowest values are recorded in February 2022. The Simpson-1_D diversity index values of Ostracoda group is varied from 0.510 to 0.777. The highest diversity values were noticed in September 2022 and the lowest values were recorded in January 2023. The Shannon_D values are ranged from 0.382 to 0.667. The highest values of Shannon wiener diversity are noticed in April 2022 and lowest values are recorded in September 2022. The values of species evenness are varied from 0.641 to 0.985. The highest values of species evenness were noticed in January 2023, lowest values are recorded in October 2022.

Commented [A13]: this value is not found in table 2, please check again

In the present study the highest average seasonal values of Simpson-1_D diversity is recorded in summer season in Rotifera (0.220) and Cladocera (0.632) groups, southwest monsoon season in Copepoda (0.518) group and Ostracoda (0.653) groups. The lowest values were noticed in southwest monsoon season in Rotifera (0.198), summer season in Copepoda (0.346) and Ostracoda (0.537) groups, northeast monsoon season in Cladocera (0.385) group respectively. The seasonal values of Shannon_D H are recorded highest in southwest monsoon season in Rotifera (1.753) and Cladocera (0.915) groups, while in Copepoda (1.247) and Ostracoda (0.655) summer season and lowest values in Rotifera (1.665) group in northeast monsoon season, southwest monsoon season in Copepoda (0.831) and Ostracoda (0.525) groups, while in summer season Cladocera (0.591) group. The highest Evenness_E values were noticed in southwest monsoon season in Rotifera (0.901), in summer season in Copepoda (0.981) and Ostracoda (0.945) groups, while in northeast monsoon season in Cladocera (0.933) group, the lower values of Rotifera (0.865) and Cladocera (0.732) groups and in southwest monsoon season in Copepoda (0.757) and Ostracoda (0.747) groups respectively. The climate of Hanumakonda is in semi-arid conditions and the maximum rain fall is recorded in July and August months of southwest monsoon season. While in the northeast monsoon season the surface water had low temperature. Due to this the diversity of zooplankton is observed less abundance in monsoon seasons and more abundance in summer months [11]. The similar type of results were made by [12].

Commented [A14]: please discuss further what affects the zooplankton diversity index to this seasonal change.

Conclusion: The present results clearly indicates that the zooplankton shows most abundance in summer season and less abundance was observed in northeast monsoons season. This may be due to the normal level of water in summer season and optimum temperature for the survive of zooplankton species.

References:

1. Balakrishna. D., Ravinder Reddy. T., Vasumathi Reddy K., Samatha. D. Physico Chemical parameters and plankton diversity of Ghanpur lake, Warangal, A.P., India.2013: *Int. J of Zool. Res.*, 3(1) 44-48.
2. Ghosh., Dr Dipankar & Biswas., Jayanta. Zooplankton Diversity Indices: Assessment of an Ox-Bow Lake Ecosystem for Sustainable Management in West Bengal. 2015 *International Journal of Advanced Biotechnology and Research*. 6. 37-43.
3. Kalpana Banoth, Balakrishna Dhatrika., T. Ravinder Reddy. Analysis of physico-chemical parameters and zooplankton abundance of yellamma lake, Husnabad mandal of warangal rural district, Telangana. 2019: *Indian Hydrobiology*, 18(1 & 2): 122–132.
4. Anil Kumar.P., Balakrishna D., Jangir O.P. Studies of physicochemical parameters and zooplankton diversity of takerial lake of Kamareddy District, Telangana. 2020: *Utter Pradesh J. of Zool*. 41(22): 100-107.
5. Hossain, Robiul., Pramanik, Md Mehedi., Hasan, Md Monjurul.. Diversity indices of plankton communities in the River Meghna of Bangladesh. 2017: *Int. J. of Fis. and Aqu. Stu.*. 5. 330-334.
6. Needham, J. G. and P. R. Needham 1962. A guide to the study of Fresh Water Biology Holden day Ins. San-Francisco, U.S.A. 108.
7. Michael, R. G. 1973. Cladocera: In a guide to the freshwater organisms. *J. Madhurai Univ. Suppl.* 1-2.
8. Battish, S. K. 1992. Freshwater zooplankton of India. Oxford and IBH Publishing Co. Pvt. Ltd., New Delhi. Pp. 130.
9. Simpson, E. H. 1949. Measurement of diversity. *Nature* 163:168. Doi: 10.1038/136688a0
10. Shannon, C. E., and Weaver, W. 1963. The mathematical theory of communication. Urban, IL: University of Illinois Press.
11. Balakrishna Dhatrika. (2017): Diversity of rotifers in three lentic water bodies of Warangal urban area, Telangana. *J. Zool. St.* 4(5): 14-18pp.

12. Rajashekhar, M., Vijaykumar K. and Zeba Paerveen 2010. Seasonal variations of zooplankton community in freshwater reservoir Gulbarga District, Karnataka, South India. *International Journal of Systems Biology*, 2(1), 06-11.

UNDER PEER REVIEW

Table No. 01. ZOOPLANKTON DIVERSITY OF HASANPARTHY LAKE DURNG THE YEAR 2022-23

ROTIFERA	Feb-22	Mar-22	Apr-22	May-22	Jun-22	Jul-22	Aug-22	Sep-22	Oct-22	Nov-22	Dec-22	Jan-23
<i>Brachionus angularis</i>	54	64	60	50	32	36	22	22	26	21	36	52
<i>Brachionus caudatus</i>	6	40	44	20	4	4	12	22	20	22	22	24
<i>Brachionus fulcatus</i>	184	188	150	98	92	20	20	34	102	100	100	126
<i>Keratella tropica</i>	164	210	210	220	40	52	36	42	112	98	100	104
<i>Keratella cochlearies</i>	102	120	120	124	42	22	22	12	135	60	98	90
<i>Cephadella gibba</i>	40	42	40	20	14	12	8	8	20	40	22	40
<i>Lecana luna</i>	42	40	40	28	10	10	8	6	12	10	24	20
Total	592	704	664	560	234	156	128	146	427	351	402	456
Copepoda												
<i>Paracyclops fimbriatus</i>	184	200	154	156	86	100	60	22	24	38	78	118
<i>Mesocyclops hyalinus</i>	144	154	128	100	42	10	14	36	42	82	100	148
<i>Mesocyclops leukarti</i>	120	116	98	100	48	4	10	16	16	50	80	96
Total	448	470	380	356	176	114	84	74	82	170	258	362
Cladocera												
<i>Ceriodaphnia coronata</i>	4	10	10	4	20	34	32	10	10	10	12	20
<i>Moina macrocopa</i>	-	-	4	2	2	10	42	28	10	16	10	32
<i>Moina barnchiata</i>	28	2	2	-	50	56	36	8	8	20	42	38
Total	32	12	16	6	72	100	110	46	28	46	64	90
Ostracoda												
<i>Cypris sps.</i>	126	120	100	98	36	68	88	80	66	72	64	112
<i>Heterocypris</i>	80	60	60	56	86	42	20	10	12	12	36	84
Total	206	180	160	154	122	110	108	90	78	84	100	196

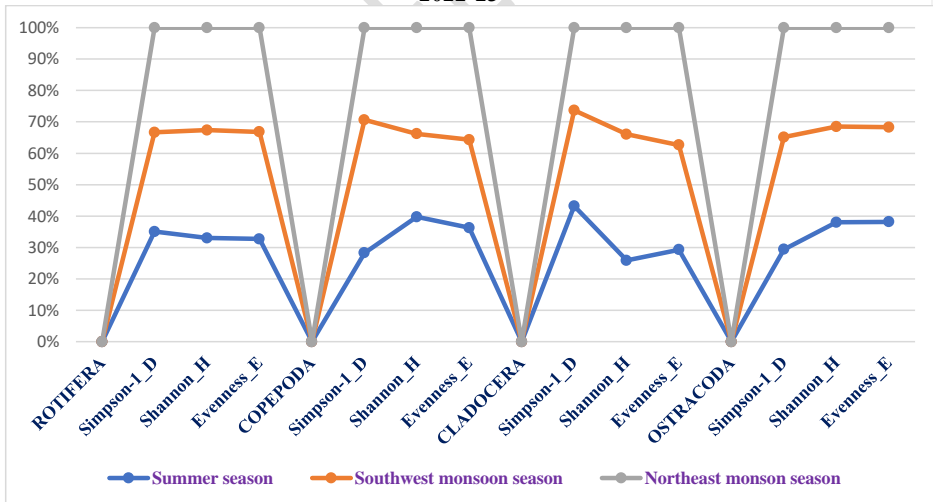
Table No. 02. ZOOPLANKTON DIVERSITY INDICES OF HASANPARTHY LAKE DURNG THE YEAR 2022-23												
	Feb-22	Mar-22	Apr-22	May-22	Jun-22	Jul-22	Aug-22	Sep-22	Oct-22	Nov-22	Dec-22	Jan-23
ROTIFERA												
Simpson-1_D	0.221	0.208	0.204	0.247	0.211	0.211	0.179	0.194	0.235	0.21	0.201	0.193
Shannon_H	1.657	1.727	1.745	1.609	1.717	1.712	1.821	1.764	1.45	1.707	1.739	1.766
Evenness_E	0.851	0.888	0.897	0.827	0.882	0.88	0.936	0.906	0.83	0.877	0.894	0.908
COPEPODA												
Simpson-1_D	0.344	0.349	0.344	0.35	0.37	0.778	0.552	0.372	0.386	0.369	0.338	0.344
Shannon_H	1.083	1.75	1.082	1.075	1.046	0.446	0.792	1.042	1.021	1.047	1.092	1.083
Evenness_E	0.986	0.978	0.985	0.978	0.952	0.406	0.721	0.949	0.93	0.953	0.994	0.986
CLADOCERA												
Simpson-1_D	0.781	0.722	0.469	0.556	0.56	0.439	0.338	0.448	0.337	0.357	0.49	0.354
Shannon_H	0.377	0.451	0.9	0.637	0.709	0.922	1.092	0.938	1.093	1.061	0.88	0.066
Evenness_E	0.544	0.65	0.819	0.918	0.645	0.839	0.994	0.854	0.995	0.966	0.801	0.97
OSTRACODA												
Simpson-1_D	0.525	0.556	0.531	0.537	0.584	0.528	0.698	0.803	0.74	0.755	0.539	0.51
Shannon_H	0.668	0.637	0.662	0.656	0.607	0.665	0.479	0.349	0.429	0.41	0.653	0.683
Evenness_E	0.964	0.918	0.954	0.946	0.835	0.959	0.691	0.503	0.619	0.592	0.943	0.985

Table No. 03. Seasonal diversity indices values of Hasanparthy lake during the year 2022-23

	Summer season	Southwest monsoon season	Northeast monsoon season
ROTIFERA			
Simpson-1_D	0.22	0.198	0.209
Shannon_H	1.684	1.753	1.665
Evenness_E	0.865	0.901	0.877
COPEPODA			
Simpson-1_D	0.346	0.518	0.359
Shannon_H	1.247	0.831	1.06
Evenness_E	0.981	0.757	0.965
CLADOCERA			
Simpson-1_D	0.632	0.446	0.385
Shannon_H	0.591	0.915	0.775
Evenness_E	0.732	0.833	0.933
OSTRACODA			
Simpson-1_D	0.537	0.653	0.636
Shannon_H	0.655	0.525	0.543
Evenness_E	0.945	0.747	0.784

Commented [A16]: add the name of the month in each season

Fig 1. Seasonal diversity indices values of Hasanparthy lake during the year 2022-23



Commented [A17]: This graph is not found in the results and discussion