

Occupancy and Abundance of Slender Loris (*Lorislydekkerianus*) at Tiruchirappalli district, Tamil Nadu, India.

Comment [H1]: (*Lorislydekkerianus*)
Remove space after and before brackets
(*Loris lydekkerianus*)

Abstract

The Slender Loris (*Loris lydekkerianus*) is listed as "Endangered" by the IUCN. Thus, assessing the status and distribution of the slender loris is critical for species conservation. The Tiruchirappalli district had 95 slender loris individuals, with an abundance of 0.51 ± 0.54 per km. The investigation was conducted utilising nocturnal survey and transect procedures. The population of slender loris in the region is growing, which raises concerns about habitat disturbance, such as the conversion of natural habitat into real estate and farmland. The study further gives insights in human-slender loris conflict.

Comment [H2]: Remove extra space and correct it as human-slender loris conflict

Key words: Slender loris, Tiruchirappalli, human- animal conflict, abundance, nocturnal survey

1. Introduction

Slender Loris are a genus of loris which is native to India and Sri Lanka. They spend most of their life in tress, moving over along the tops of tree branches in slow and precise movements. These are found in swamps, tropical rainforests, semi-deciduous forests and scrub forests (1). Slender loris are listed under the endangered species by IUCN, whereas they are listed under the Scheduled I of the Wildlife Protection Act of India, 1972. The major threat for Slender loris is false or misplaced belief that they possess magical and medicinal powers to cure poor eyesight, joint pain or leprosy. as a result they been heavy poached and also treaded as pet to foreign countries(2). The importance and ecological role of this species is not made aware as other larger mammals. In this research paper, we explored the Reserved forests, sub-urban and rural habitats of Tiruchirappalli district to record existence, distribution, and abundance of slender loris.

Comment [H3]: Provide citations for the information presented in the introduction, especially regarding the ecological role of Slender Lorises and the threats they face. This will strengthen the credibility of the information provided.

1.1. Study Area

Comment [H4]: Consider briefly mentioning any previous research or studies conducted on Slender Lorises in Tiruchirappalli district or similar regions, to provide context for the current study and highlight its contribution to existing knowledge.

Tiruchirappalli District being the heart of Tamil Nadu with major river Cauvery cuts across the terrain, it is fertile land with deltaic topography from west to east. Pachamalai Hills are the only prominent hills which belongs to eastern ghats. The Tiruchirappalli enjoys tropical hot monsoon climate with an average annual rainfall of 900 mm. There are four forest ranges at Tiruchirappalli district namely Trichy, Thuvankuruchi, Manaparai, and Thuraiyur chosen as study locations. The forest type varies from Southern Tropical Dry Mixed Deciduous Forest, Southern Tropical Forest, Tropical Thorn Forest (Scrub Jungle), Tropical Dry Deciduous Forests, and Evergreen Forest(3). To learn more about the occurrence and distribution, the sub-urban and rural parts of the Tiruchirappalli district were also investigated. The farmland and plantations near the villages were also studied.

Fig 1. Picture of Slender Loris taken during Survey at Pallakadu



2. Methods

The Grey Slender Loris is a nocturnal mammal that is highly active from 19:00 hr to 6:00 hr; hence, nocturnal surveys were adapted to record the slender loris. The survey was done between 20:00 hrs. and 04:00 hrs. The survey was done for a period of one year, from January 2022 to December 2022. Existing natural trails were used as transects in the forests

Comment [H5]: Clarify if surveys were conducted on consecutive nights or at specific intervals throughout the year to provide a clearer understanding of the survey schedule.

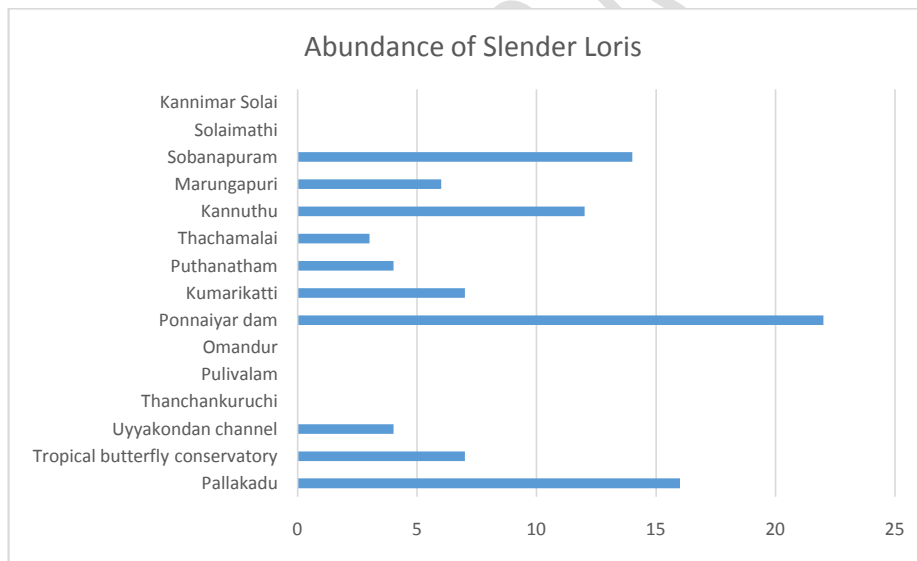
for the surveys following the best recommendations (4,5). A survey was carried out using headlamps covered with red filters, as lorises are not disturbed by a red light compared to white light (6-9). Vehicle surveys and foot transects were also adopted and followed depending on the access and topography of the terrain for the surveys (10,11). Vehicle speed was maintained at an average of 20 km/h. A handheld GPS Garmin Etrex 10 was used to calculate the distance covered during the survey and the geographical location of the sighted animals. The geo-tagged locations were transformed into maps using ARC GIS software version 10.9 (3).

Comment [H6]: Provide details on the sample size, such as the number of transects surveyed and the frequency of observations, to contextualize the data collected.

3. Results

The study resulted in an abundance of 95 individuals of Slender Loris in Tiruchirappalli district. The Ponnaiyar dam resulted in the highest number of individuals of 22, followed by Pallakadu with 16 individuals (Fig.2).

Fig.2. Abundance of Slender Loris in Study Area



The relative abundance of Slender Loris ranged from 1.83 individuals/km in Ponnaiyar dam to 0.33 individuals/km in Puthanatham RF (Table.1).

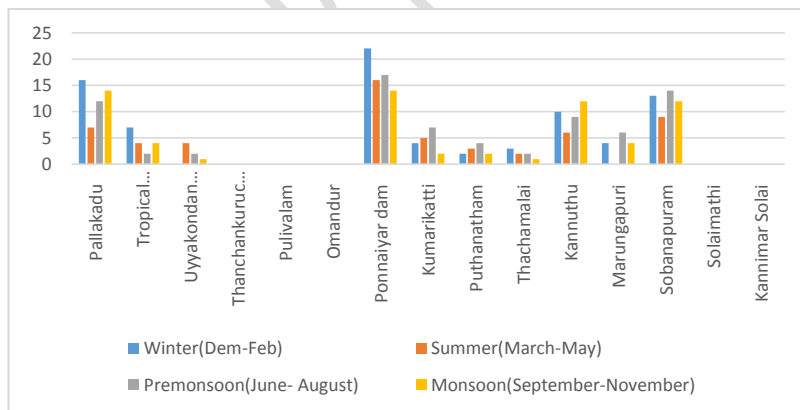
Table 1. Relative Abundance of Slender Loris at Tiruchirappalli district

Location	No. of Lorises Sighted	Kilometres Surveyed	No. of Lorises/km
Ponnaiyar dam	22	12	1.45

Pallakadu	16	11	0.58
Sobanapuram	14	16	0.67
Kannuthu	12	17	-
Kumarikatti	7	13	-
Tropical butterfly conservatory	7	12	-
Marungapuri	6	14	1.83
Puthanatham	4	12	0.54
Uyyakondan channel	4	6	0.33
Thachamalai	3	8	0.38
Thanchankuruchi	0	16	0.71
Omandur	0	8	0.43
Solaimathi	0	5	0.88
KannimarSolai	0	7	-
Pulivalam	0	14	-
Grand Total	95	171	0.51±0.54 (Mean±SD)

The sighting frequency of slender loris was high in winters than compared to other seasons (Fig.3).

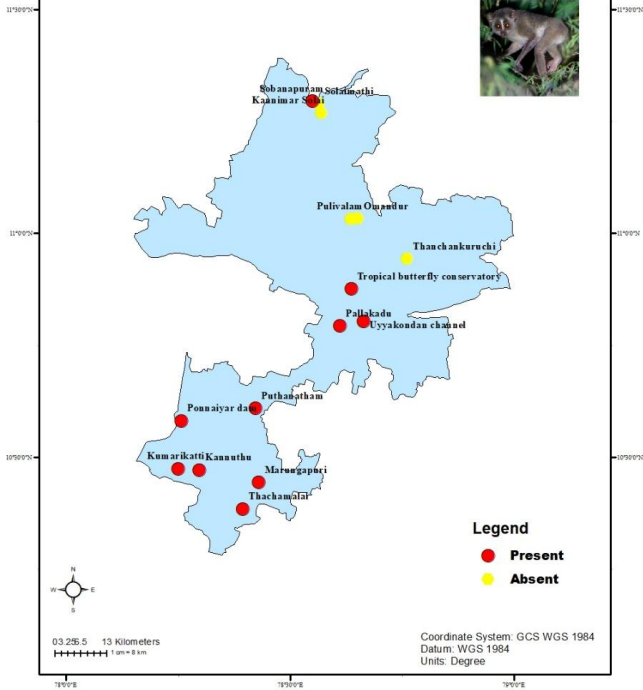
Fig.3. Sighting Frequency of Slender Loris in different seasons



The map (Fig.4) shows the Occupancy of slender loris in Tiruchirappalli district. The map (Fig. 5) shows the human- slender loris Conflict prone areas.

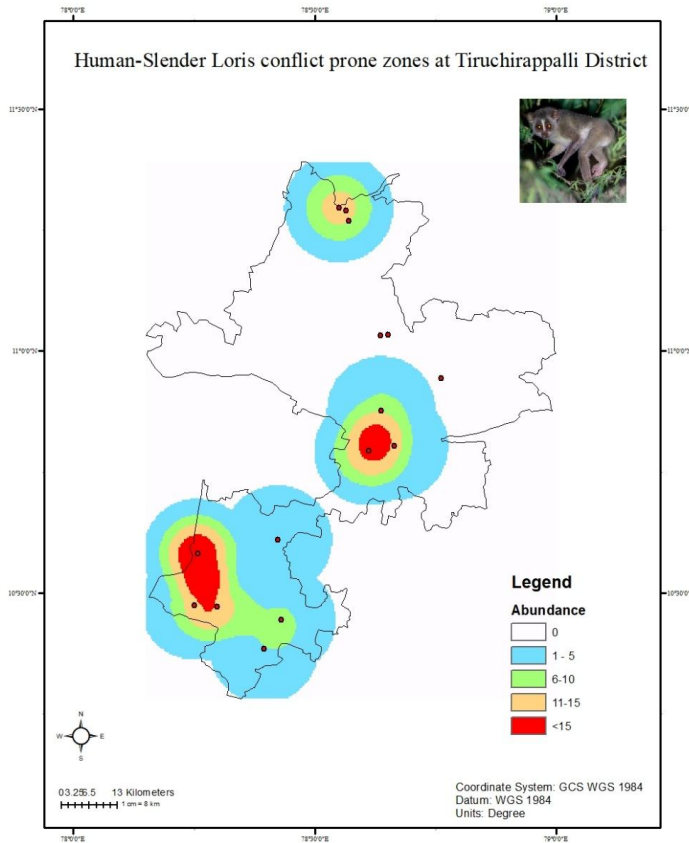
Fig 4. The map showing the Occupancy of Slender Loris at Tirchirappalli District

Occupancy of Slender Loris at Tiruchirappalli District



UNDER REVIEW

Fig 5. The map showing Human- Slender Loris Conflict prone zone at Tiruchirappalli District



4. Discussion

The slender loris abundance in Ponnaniyar dam was high as it was adjacent to the newly announced slender loris sanctuary, Kadavur, in Tamil Nadu. The Ponnaniyar Dam Reserved Forest lies on the on the eastern slope of the Slender Loris Sanctuary, which doesn't come under the status of a sanctuary. The relative abundance of the slender loris varies across its range in southern India. In Kerala, the Malabar slender loris has a low relative abundance, with less than 0.2 individuals per kilometer in most forest divisions (12). In Karnataka, the relative abundance of the two subspecies, *Loris lydekkerianuslydekkerianus* and *L. l. malabaricus*, is 0.41 and 0.21 individuals per kilometer, respectively (13). In Tamil Nadu, the grey slender loris has a wider distribution, with relative abundance ranging from 0.01 to 2.21

individuals per kilometer, and the highest densities found in the south-central districts (1). Where Tiruchirappalli district had highest of 2.21 individuals per kilometer, followed by Pudukkottai and Karur district of 1.95 and 1.23 individuals per kilometre (1). The previous study of Kumara et al., 2016 showed higher relative abundance of Tiruchirappalli district compared to the present study of 0.55 individuals per kilometre because the total area surveyed or covered is 18 kms was lesser than the present study which covered the total 171 kms.

The Slender Loris frequency of sighting was higher in winter season of December to February as there was adequate amount of food and water present in the study area, while in summer the water availability was limited or dried up. Hence the best time to study or observe slender loris was during the winters.

A total of 15 sites were surveyed but only in 10 locations the slender loris were present. Study area had different habitat ranging from tropical scrub forest, tropical evergreen forest, semi-arid scrub forest, mixed dry deciduous and Farmland and River channels. Among the different habitats the farmlands, river channels and tropical scrub forest had a maximum number of slender loris, also causing these areas to be highly conflict prone zones due to rapid urbanization and habitat alterations. (Fig. 5) The conflict zones should be monitored, and the involvement of locals with the aid of the forest department is essential in creating awareness in those areas.

5. Conclusion and Suggestion

The Grey slender loris population have been increased when compared to previous study (2) in 2019. The increasing population has major threats of habitat alteration such converting the land into real estates and farm land. The alarming urbanization and habitat destruction should be strictly monitored for survival of species. behavioural and evolutionary studies will throw more insights to the conservational strategies of the grey slender loris.

References

1. Kumara, H. N., Sasi, R., Chandran, S., & Radhakrishna, S. (2016). Distribution of the grey slender loris (*Loris lydekkerianus* Cabrera, 1908) in Tamil Nadu, southern India. *Folia Primatologica*, 87(5), 291-302.
2. Carlton R., Daisy Caroline Mary A., & Griffith Michael G. (2023). Status and Threats of Slender Loris (*Loris lydekkerianus*) at Tiruchirappalli District, Tamil Nadu,

Comment [H7]: If possible consider discussing potential implications of habitat alterations and urbanization on Slender Loris populations, such as fragmentation effects or increased human wildlife conflict, to provide a more comprehensive understanding of conservation challenges in the study area.

Comment [H8]: Consider expanding on the specific conservation strategies or management interventions that could be implemented to address the identified threats to Slender Loris populations. Providing concrete recommendations for action can enhance the practical relevance of the conclusion.

Comment [H9]: Format the reference in the journal's style of formatting.

India. *UTTAR PRADESH JOURNAL OF ZOOLOGY*, 44(20), 87–91.

<https://doi.org/10.56557/upjoz/2023/v44i203649>

3. Griffith Michael G., & Joonu J. (2024). Status and Distribution of Indian Gaur (*Bos gaurus*) in Reserved Forests of Tiruchirappalli, Tamil Nadu, India. *UTTAR PRADESH JOURNAL OF ZOOLOGY*, 45(4), 131–136. <https://doi.org/10.56557/upjoz/2024/v45i43915>
4. Sterling, E. J., & Ramarason, M. G. (1996). Rapid assessment of the primate fauna of the eastern slopes of the Reserve Naturelle Integreale' Andringitra, Madagascar. *Fieldiana Zoology*, 293-305.
5. Marshall, A. R., Lovett, J. C., & White, P. C. (2008). Selection of line- transect methods for estimating the density of group- living animals: lessons from the primates. *American Journal of Primatology: Official Journal of the American Society of Primatologists*, 70(5), 452-462.
6. Radhakrishna, S., & Singh, M. (2002). Home range and ranging pattern in the slender loris (*Loris tardigradus lydekkerianus*). *Primates*, 43, 237-248.
7. Radhakrishna, S., Kumara, H. N., & Sasi, R. (2011). Distribution patterns of slender loris subspecies (*Loris lydekkerianus*) in Kerala, southern India. *International Journal of Primatology*, 32, 1007-1019.
8. Lavanya, R., & Gokula, V. (2022). Plant. Species preferred for sleeping during day hours by Mysore slender loris *Loris lydekkerianus lydekkerianus* in Keelaveliyur, Tamil Nadu. *Indian J Nat Sci*, 13, 75.
9. Singh, M., Singh, M., Kumara, H. N., Kumar, S., Gnanaoliu, S. D., & Sasi, R. (2021). A review of research on the distribution, ecology, behaviour, and conservation of the Slender Loris *Loris lydekkerianus* (Mammalia: Primates: Lorisidae) in India. *Journal of Threatened Taxa*, 13(11), 19540-19552.
10. Prakash, I., & Singh, H. (2001). Composition and species diversity of small mammals in the hilly tracts of southeastern Rajasthan. *Tropical Ecology*, 42(1), 25-33.
11. Nekaris, K. A. I., & Jayewardene, J. (2003). Pilot study and conservation status of the slender loris (*Loris tardigradus* and *L. lydekkerianus*) in Sri Lanka. *Primate Conservation*, 19, 83-90.
12. Sasi, R., & Kumara, H. N. (2014). Distribution and relative abundance of the slender loris *Loris lydekkerianus* in southern Kerala, India. *Primate Conservation*, 2014(28), 165-170.
13. Kumara, H. N., Singh, M., & Kumar, S. (2006). Distribution, habitat correlates, and conservation of *Loris lydekkerianus* in Karnataka, India. *International Journal of Primatology*, 27, 941-969.