

Protein-Protein docking studies on Magnesium chelatase of *Ulva fasciata* against the human TSHR protein.

Comment [A1]: Is it permissible to use abbreviations in titles? It's best to look again at the articles in this journal

Abstract

..... The course and prognosis of hypothyroidism in humans are affected by the most common mutation in the hypothyroid protein, TSHR. In order to facilitate the potential mutant TSHR's interaction with *Ulva fasciata*'s magnesium-chelatase, we utilize 3D *Insilico* drug docking approaches. The translated amino acid sequence and three-dimensional chemical compound were taken from the NCBI database in order to perform drug docking procedures. In post-docking tests, advanced 3D molecular visualization capabilities were utilized. In post-docking tests, advanced 3D molecular visualization capabilities were utilized. The findings of the docking investigation indisputably demonstrate that amino acid mutational sites are directly suppressed by magnesium chelatase. The H-bond interaction between TSHR and magnesium chelatase is shown in three dimensions by means of concepts from molecular dynamics techniques. Ultimately, we found that *Ulva fasciata*'s pharmaceutical ingredient, magnesium chelatase, aids in the treatment of hypothyroidism. One of the main endocrine hormonal problems is hypothyroidism, and our research serves to demonstrate how well the sea weed *Ulva fasciata* works as a unique medicinal agent to treat this disorder.

Comment [A2]: At the beginning of the sentence, state the basic problem, followed by the research objectives so that the problems and objectives of this research are clearly visible

Comment [A3]: what does that mean thyroid stimulating hormone receptor? It's best to complete the extension

Comment [A4]: It's best to complete it with a small conclusion at the end of this sentence

Keywords: TSHR, *Ulva fasciata*, Protein –Protein Docking

Introduction

Thyroid-associated ophthalmopathy, also referred to as Graves' orbitopathy (GO), is a relatively uncommon condition, with an incidence of 2.67–3.3 cases/100,000/year in females and 0.54–0.9 cases/100,000/year in males [1]. The incidence of GO varies depending on the testing method used to diagnosis GO, such as clinical signs and symptoms, physical

examination, and imaging techniques, and affects approximately 25% to 50% of patients with Graves disease (GD). Eye discomfort, photophobia, hazy vision, increased tear production, and double vision are common signs of GO. One or both eyes may be affected by GO's periorbital oedema, exophthalmos, eyelid recession, and alterations in eye motility. A significant portion of GO patients—roughly 5–6%—have compressive optic neuropathy or potentially blinding corneal ulcerations; these individuals may go blind. Although GO can occur at any age, it most frequently affects women between the ages of 30 and 50 [2]. However, men and individuals who receive a diagnosis later in life tend to have more severe cases of GO [3]. Smoking, high cholesterol, thyroid dysfunction, radioiodine therapy, low thyroid peroxidase antibodies (TPOAbs), high thyrotropin receptor antibodies (TRAbs), and low thyroglobulin antibodies (TgAbs) are traditional risk factors for GO. High thyroglobulin (Tg) [4], a selenium deficit, an imbalance in the intestinal flora, and elevated levels of *Yersinia enterocolitica* and *Escherichia coli* in the digestive tract are new risk factors for GO [5].

The biological and chemical potential of seaweeds has been covered in other papers [6, 7, 8, 9] [1, 2, 3, 4]. Global seaweed aquaculture has generated about 30 million tons of fresh biomass in the last few decades, with a projected market value of over \$13.3 billion. More than 95% of the seaweed produced worldwide is farmed by *Laminaria/Saccharina* (35.4%), *Kappaphycus and Eucheuma* (33.5%), *Gracilaria* (10.5%), *Porphyra* (8.6%), and *Undaria* (7.4%) [10]. Seaweeds therefore represent a prospective millennium market with a number of social, economic, and ecological advantages [5, 6]. Coral reefs have lost up to 67% of their historical global range, making them one of the planet's most threatened ecosystems. Furthermore, human activity and the consequences of climate change pose a threat to the remaining intact coral reef systems, as reported in a recent report by the Global Coral Reef Monitoring Network [11, 12]. Prior studies in the literature suggest that coral's secondary metabolites may have cytotoxic, anti-inflammatory, antifouling, and antimicrobial properties in addition to benefits for bone repair and the nervous system [13, 14, 15, and 16].

Our investigation analysed in detail the molecular interactions between the sea weed protein of *Ulva fasciata* and the human Thyroid Stimulating Hormone Receptor (TSHR). The final results clearly showed the mechanism of inhibition of magnesium chelatase with the Thyroid Stimulating Hormone Receptor.

Methodology

Comment [A5]: This has nothing to do with the problem being studied, it is best to just delete it so that it does not interfere with the main aim of this research

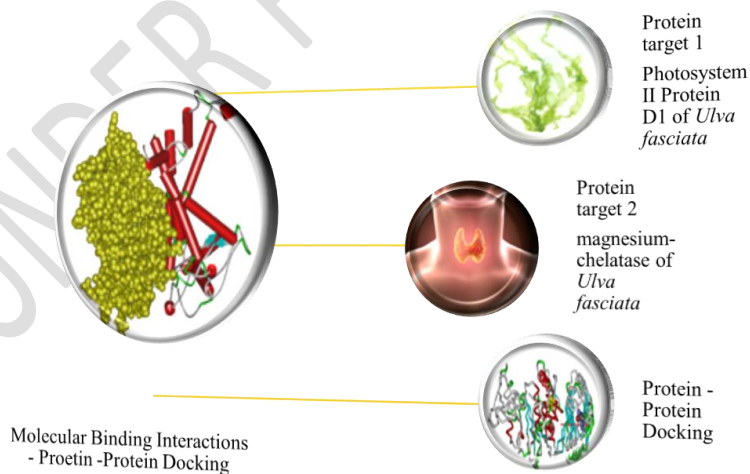
Comment [A6]: It is better to replace it with research related to the seaweed being studied so that it is more focused

Comment [A7]: This is good, it would be better to consistently display the abstract, results, discussion and conclusions

Target selection: Data from the NCBI Genpept database (YP_009220447.1 magnesium-chelatase (*Ulva fasciata*) and (AAI20973.1 TSHR protein (Human)) were utilized to conduct a molecular drug docking study. A powerful molecular visualization application called Discovery Studio was used to anticipate three-dimensional structures.

Protein Docking: HDock, an automated molecular drug docking service (<http://hdock.phys.hust.edu.cn/>), has been used in molecular drug docking research. [17]. Using a 3D molecular dynamics method, the molecular affinities of TSHR protein and YP_009220447.1 magnesium-chelatase (*Ulva fasciata*) in human hypothyroidism were ascertained.

Protein-Protein docking: Experiments involving post-docking were conducted with the Discovery Studio software. Using the molecular dynamics concept, a thorough analysis of the three-dimensional image based on the docking score (3D H-bond/Electrostatic interactions) was carried out.



Pic 1. Diagrammatic representations of the overview of the *Insilico* research work

Comment [A8]: It's best to make it clear using directional arrows so you know the order of work

UNDER PEER REVIEW

Results and Discussion

```
>YP_009220447.1 magnesium-chelatase subunit ChII (chloroplast) [Ulva
fasciata]
MSEKIELESRPVFPFTSIVGQEEMKLALILNVIDPKIGGVMVMDRGTGKSTTVRALSDLLPDMKVAND
PFNSDPNDPELMSDEVADKIKNKTLLEIETKKIPMIDLPLGATEDRVCGTIDMEKALTEGKAFEPGLLA
SANRGILYDEVNLLDDHLVDVLLDSAASGWNTVEREGISISHPARFILVSGSNPEEGELRPQLLDRFGM
HAEIRTVKEPDLRVQIVEQRAAFSDPIEFRNNYSESQKTLSEKIVKARELLKEVDLNYEFRIKISQICS
ELNVDGLRGDIVTNRAAKALTAFEGRNEVTAQDIFRVIPLCLRHLRKRDPLETIDSGDKVRDIFKKIFS
```

Fig.1: Amino acid sequence of the sea weed, *Ulva fasciata*

```
>AAI20973.1 TSHR protein [Homo sapiens]
MRPADLLQLVLLLDLPRDLGGMGCSPPCECHQEEDFRVTCKDIQRIPSLPPSTQTLKLIETHLRTIPSH
AFSNLPNISRIYVSIDVTLQQLESHSHFYNSKLVTHIEIRNTRNLTYIDPDALKELPLLKFLGIFNTGLKM
FPDLTKVYSTDIFFILEITDNPYMTSIPVNAFQGLCNETLTLKLYNNGFTSVQGYAFNGTKLDAVYLNKN
KYLTVIDKDAFGGVYSGPSLL
```

Fig.2: Amino acid sequence of human TSHR protein

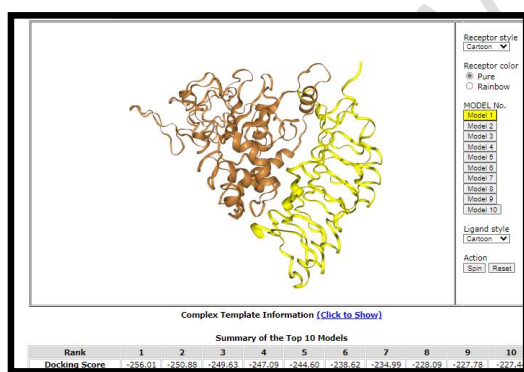
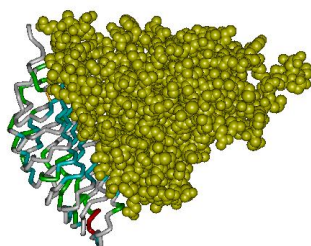


Fig.3: Complex form of human TSHR protein and YP_009220447.1 magnesium-chelatase of *Ulva fasciata* viewed using H-Dock server with respective binding scores.



Comment [A9]: it is best to complete it with an introductory sentence to enter the results to make it clearer

Comment [A10]: It is better to order the results and discussion according to the research objectives so that they are more structured and systematic and easy for readers to understand

Fig.5: Complex form of human TSHR protein and YP_009220447.1 magnesium-chelatase of *Ulva fasciata* viewed using Discovery Studio Software. Yellow coloured structure represents the TSHR protein.

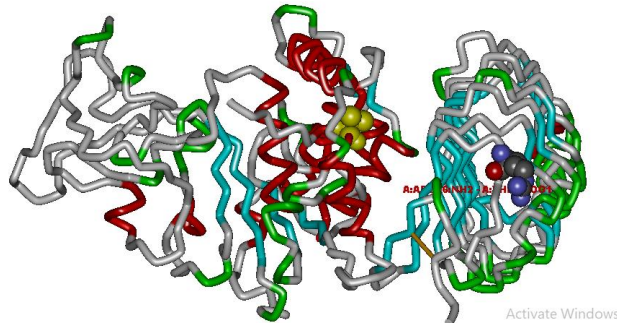


Fig.6: 3D Complex form of human TSHR protein and magnesium-chelatase of *Ulva fasciata* viewed using Discovery Studio software (Binding Interaction Mode).

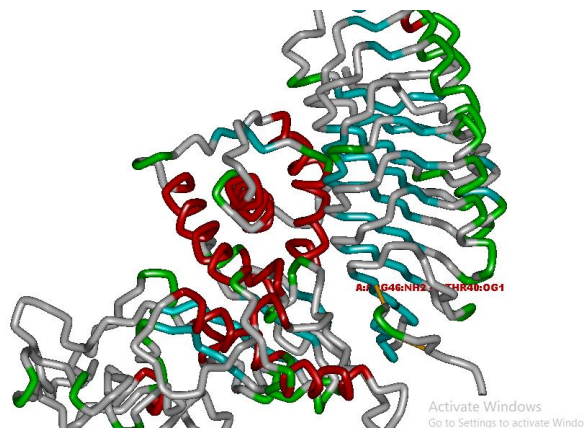


Fig.7: 3D Complex form of human TSHR protein and magnesium-chelatase protein of *Ulva fasciata* viewed using Discovery Studio software (Binding Interaction Mode with respective amino acid labels/positions).

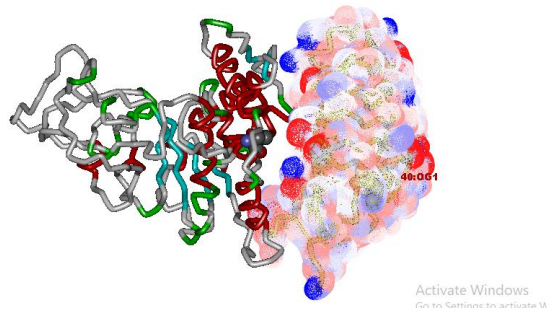


Fig.8: 3D Complex form of human TSHR protein and magnesium-chelatase protein of *Ulva fasciata* viewed using Discovery Studio software (Amino acids interacting at Domain and Motif).

The amino acid sequences corresponding to the gene-coded proteins of photosystem II protein D1 (*Ulva fasciata*) and TSHR are 349 aa and 231 aa, respectively (Fig: 1 and 2). In our research work, we use the potential inhibitor derived from algae (*Ulva fasciata*).

Marine macroalgae are eukaryotic, macroscopic, multicellular, photosynthetic organisms that are classified as belonging to the order Plantae. Seaweed is another name for these creatures. In addition to the seabed or solid rock strata beneath it, these salt-loving marine plants can also be found on the surfaces of rocks, corals, shells, pebbles, and other plants. In oceanic places where light is most abundant, marine algae typically thrive in the tidal and subtidal zones. Because of their easy response to physiological changes by creating stress-tolerant chemicals, they can endure extreme temperatures, cold temperatures, UV radiation, salinity, and desiccation. A multitude of primary and secondary metabolites are produced by them as a result of their survival. Numerous physiologically active substances with a range of therapeutic advantages can be found in marine algae [18, 19].

The complex form of the TSHR protein retrieved via the H-Dock server and photosystem II protein D1 have a 3D docking score of -256.01 kcal/mol , (Fig :3) as illustrated in Fig. (1). Using Discovery Studio software, the H-bond interactions between photosystem II protein D1 and the TSHR protein are displayed in detail (Fig: 4, 5, 6, 7, 8). It is clear from this image that the TSHR protein and the photosystem II protein D1 protein structure have interacted non-covalently. Therefore, it may be said that, as demonstrated by

Comment [A11]: This research is very interesting, but the discussion is still weak in explaining the results obtained, and there is a lack of comparative references. It would be better to deepen the discussion.

Comment [A12]: This should be included in the research method

Comment [A13]: It is best to connect it to the research objectives so that this narrative has meaning

earlier research, the TSHR protein will be downregulated. Our docking studies are consistent with a number of prior investigations [17, 18, 19, 20, 21, 22].

Comment [A14]: It seems like it needs to be discussed a little, why did it happen like that?

Our retrieved protein's functional domain area is the *Ulva fasciata* 46 SER (44-51) ATP/GTP-binding site motif A (P-loop (PS00017). Our research demonstrates that gentamicin, an antibiotic, interacts directly with the domain areas. Our study unequivocally demonstrated that the following amino acids are present at the drug-protein binding region: ARG:46,THR:40,ARG:241,GLU:34,TYR:244,GLN:33

Comment [A15]: Maybe this requires further explanation complete with comparative references to strengthen the results obtained?

Conclusion

Our study unequivocally demonstrates the interaction between the seaweed protein and the human hypothyroidism protein, TSHR. The *Ulva fasciata* magnesium-chelatase binds efficiently to the TSHR protein's functional domain area, as demonstrated by our clear docking data. The H-bond interaction is clearly defined by the binding relationship between magnesium-chelatase and TSHR protein, as assessed by docking scores. Therefore, we conclude that *Ulva fasciata* seaweed protein functions as a possible Endocrinological medication that lessens the symptoms of hypothyroidism in humans. Our *Insilico* study clearly shows that the human TSHR protein may be pharmacologically affected by magnesium-chelatase.

Comment [A16]: These should be included in the discussion and placed in order of research objectives

Comment [A17]: This needs to be emphasized as a conclusion by referring to the research objectives

References

1. Bartalena, L., Kahaly, G. J., Baldeschi, L., Dayan, C. M., Eckstein, A., Marcocci, C., Marinò, M., Vaidya, B., Wiersinga, W. M., & EUGOGO † (2021). The 2021 European Group on Graves' orbitopathy (EUGOGO) clinical practice guidelines for the medical management of Graves' orbitopathy. *European journal of endocrinology*, 185(4), G43–G67.
2. Bartalena L. (2013). Diagnosis and management of Graves disease: a global overview. *Nature reviews. Endocrinology*, 9(12), 724–734.
3. Weiler D. L. (2017). Thyroid eye disease: a review. *Clinical & experimental optometry*, 100(1), 20–25.
4. Khamisi, S., Lundqvist, M., Emadi, P., Almby, K., Ljunggren, Ö., & Karlsson, F. A. (2021). Serum thyroglobulin is associated with orbitopathy in Graves' disease. *Journal of endocrinological investigation*, 44(9), 1905–1911
5. Cao, J., Su, Y., Chen, Z., Ma, C., & Xiong, W. (2022). The risk factors for Graves' ophthalmopathy. *Graefe's archive for clinical and experimental ophthalmology = Albrecht von Graefes Archiv fur klinische und experimentelle Ophthalmologie*, 260(4), 1043–1054.
6. Kalasariya, H. S., Yadav, V. K., Yadav, K. K., Tirth, V., Algahtani, A., Islam, S., Gupta, N., & Jeon, B. H. (2021). Seaweed-Based Molecules and Their Potential Biological Activities: An Eco-Sustainable Cosmetics. *Molecules (Basel, Switzerland)*, 26(17), 5313.

Comment [A18]: It is best to add specific references related to the type of seaweed used in this research

7. Lomartire, S., & Gonçalves, A. M. M. (2022). An Overview of Potential Seaweed-Derived Bioactive Compounds for Pharmaceutical Applications. *Marine drugs*, 20(2), 141.
8. Gomez-Zavaglia, A., Prieto Lage, M. A., Jimenez-Lopez, C., Mejuto, J. C., & Simal-Gandara, J. (2019). The Potential of Seaweeds as a Source of Functional Ingredients of Prebiotic and Antioxidant Value. *Antioxidants (Basel, Switzerland)*, 8(9), 406.
9. Salehi, B., Sharifi-Rad, J., Seca, A. M. L., Pinto, D. C. G. A., Michalak, I., Trincone, A., Mishra, A. P., Nigam, M., Zam, W., & Martins, N. (2019). Current Trends on Seaweeds: Looking at Chemical Composition, Phytopharmacology, and Cosmetic Applications. *Molecules (Basel, Switzerland)*, 24(22), 4182.
10. Sultana, F. *et al.* (2023) 'Seaweed farming for food and nutritional security, climate change mitigation and adaptation, and women empowerment: A Review', *Aquaculture and Fisheries*, 8(5), pp. 463–480. doi:10.1016/j.aaf.2022.09.001.
11. Ashkenazi, D. Y., Figueroa, F. L., Korbee, N., García-Sánchez, M., Vega, J., Ben-Valid, S., Paz, G., Salomon, E., Israel, Á., & Abelson, A. (2022). Enhancing Bioproducts in Seaweeds via Sustainable Aquaculture: Antioxidant and Sun-Protection Compounds. *Marine drugs*, 20(12), 767.
12. Devlin M. J. (2022). Coral reefs: The good and not so good news with future bright and dark spots for coral reefs through climate change. *Global change biology*, 28(15), 4506–4508.
13. Yan, X., Liu, J., Leng, X., & Ouyang, H. (2021). Chemical Diversity and Biological Activity of Secondary Metabolites from Soft Coral Genus *Sinularia* since 2013. *Marine drugs*, 19(6), 335.

14. Souza, C. R. M., Bezerra, W. P., & Souto, J. T. (2020). Marine Alkaloids with Anti-Inflammatory Activity: Current Knowledge and Future Perspectives. *Marine drugs*, 18(3), 147.
15. Alves, C., & Diederich, M. (2021). Marine Natural Products as Anticancer Agents. *Marine drugs*, 19(8), 447.
16. Sheehy, E. J., Lemoine, M., Clarke, D., Gonzalez Vazquez, A., & O'Brien, F. J. (2020). The Incorporation of Marine Coral Microparticles into Collagen-Based Scaffolds Promotes Osteogenesis of Human Mesenchymal Stromal Cells via Calcium Ion Signalling. *Marine drugs*, 18(2), 74.
17. Yan, Y. *et al.* (2020a) 'The HDock server for integrated protein-protein docking', *Nature Protocols*, 15(5), pp. 1829–1852. doi:10.1038/s41596-020-0312-x.
18. Park, B. S., & Li, Z. (2022). Taxonomy and ecology of marine algae. *Journal of Marine Science and Engineering*, 10(1), 105.
19. Jimenez-Lopez, C., Pereira, A. G., Lourenço-Lopes, C., Garcia-Oliveira, P., Cassani, L., Fraga-Corral, M., Prieto, M. A., & Simal-Gandara, J. (2021). Main bioactive phenolic compounds in marine algae and their mechanisms of action supporting potential health benefits. *Food chemistry*, 341(Pt 2), 128262.
20. Houseini, S. T., Nemati, F., Sattari, A., Azadeh, M., & BishehKolaei, R. (2023). Design of crRNA to Regulate MicroRNAs Related to Metastasis in Colorectal Cancer Using CRISPR-C2c2 (Cas13a) Technique. *Cell journal*, 25(5), 354–362.
21. Astalakshmi, P. *et al.* (2023a) 'Identification of the efficiency of pentane on the bacterial and insecticide proteins of Aedes aegypti and aeromonas hydrophila by Insilico Methods', *International Journal of Mosquito Research*, 10(3), pp. 47–53. doi:10.22271/23487941.2023.v10.i3a.678.

22. Astalakshmi, P. *et al.* (2023b) 'In silico study on hexadecanoic acid against the outer membrane protein transport protein of *Culex quinquefasciatus* and *aeromonas hydrophila*', *International Journal of Mosquito Research*, 10(4), pp. 07–14. doi:10.22271/23487941.2023.v10.i4a.680.
23. G, N. and V, P. (2023) 'Identification of a plant derivative (*Hibiscus cannabinus*) for Mosquito (*anopheles darlingi*) control using in silico protein-protein docking techniques', *International Journal of Mosquito Research*, 10(4), pp. 25–29. doi:10.22271/23487941.2023.v10.i4a.683.
24. Maithreyee S,* and Prabha V,(2023) 'Molecular Interactions between Anti-inflammatory Drug with Colorectal Cancer (MSH2) Protein Using In-silico Studies'. *Solovyov Studies ISPU*. 71(10), 171-186.
25. Nijanthi, P., S, S. and Munivelan, B. (2023) 'Molecular dynamics studies on the arginine kinase protein of *Aedes sollicitans*: Against the natural chemical compound, Gedunin', *International Journal of Mosquito Research*, 10(2), pp. 10–14. doi:10.22271/23487941.2023.v10.i2a.665.
26. Suganya, M. and Devi, G.B. (2023) 'Heavy Metal (PB) bioaccumulation study in *Eisenia fetida* and in the larvae of *anopheles gambiae* complex using in silico drug docking protocols', *International Journal of Mosquito Research*, 10(6), pp. 45–51. doi:10.22271/23487941.2023.v10.i6a.716.